

Ultra Thin Mat

Exceptionally thin, lightweight mat with a specially formulated non-slip base. Great for cover mounts and mailings. A selection of standard shapes are available.



Key Product Information

Product Code:	UTMat
Commodity Code:	39269092
MOQ:	100
Size:	See Artwork Requirements
Available Thickness:	0.5mm
Branding Area:	Within dimensions
Branding Method:	4 Colour Process
Material:	PVC laminated to a thin non-slip base
Made In:	UK
PDF Proof:	24-48 Hours
Express Service	48 Hour
Available:	
Printed Proof Leadtime:	3 Working days
Leadtime:	10 Working days from proof approval
Colour:	N/A
Weight:	32g

Packaging and Other Information

No Per Carton:	450
Packaging Details:	340 x 215 x 380mm
Carton Weight:	15.3Kg
Standard Packaging:	Bulk Packed
Alternative Packaging:	Mailing Sleeves, Shrink Wrapped, Bag with Header Card, Envelope

Recommendations and Limitations

Ideal For: Postal Campaigns, IT Companies, Educational Organisations, Pharmaceutical, Recruitment

Ultra Thin Mat

Sizes available: Rectangle 200mm x 235mm, Square 200mm x 200mm, Oval 200mm x 235mm, Circle 200mm diameter, House 230mm x 195mm, Heart 200mm x 235mm, Phone 233mm x 185mm, T-Shirt 220mm x 200mm, Truck 200mm x 210mm, Hexagon 230mm x 200mm, Laptop 200mm x 235mm, Pillow 200mm x 235mm

Full colour:

- All graphics should be supplied as high resolution CMYK files at a minimum of 300dpi
- All design components must be supplied and clearly identified. This includes Tiff, EPS and PDF files; all printer fonts used in the main file & imported graphics.

Regardless of print method:

- Allow 10mm bleed all around the design.
- Artwork to be emailed with your order number and company name in the reference line or supplied on CD with same information clearly labelled.

Full detailed guidelines including limitations & recommendations are available for each printing method on request.

QR Codes - Please note that the print process and substrates used in the production of this item may not always allow QR codes, if present on your artwork, to function correctly. When approving your proof, you are accepting that this may be the case and as such accept full liability for any malfunction of the QR code.

See the following page(s) for the artwork templates for this product.

All information correct at time of publication. Whilst we endeavour to maintain the accuracy of this document, details may change without notice.



Standard Mat

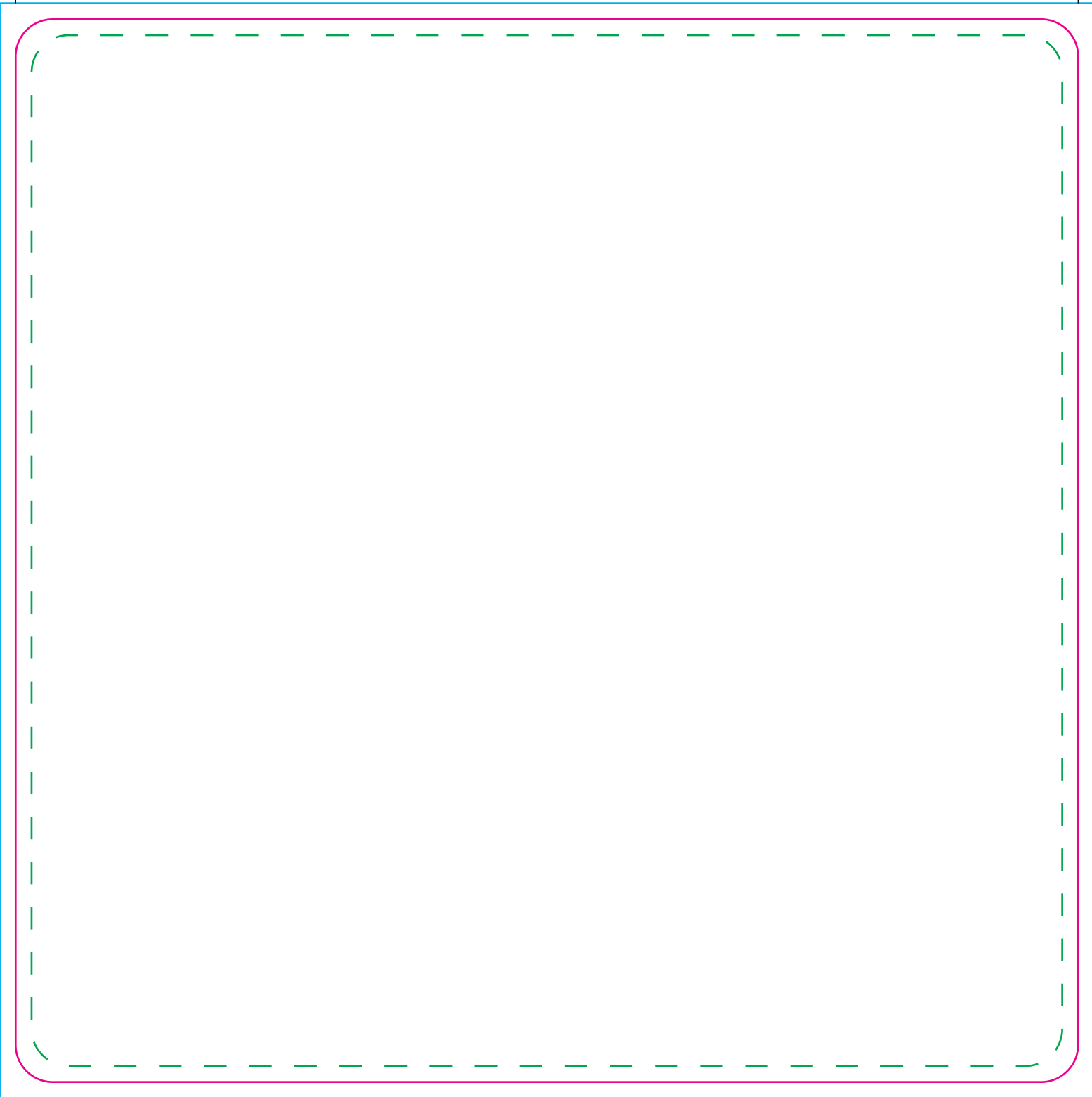
Tool No: 235
Shape: Rectangle

Cut Size -
Width: 235mm
Height: 200mm

Artwork with Bleed -
Width: 241mm
Height: 206mm

--- Please keep all live matter such as text, logos and other important images within this area.

This dieline represents a current finishing tool. Any alterations to this dieline may incur additional charges.



Mat

Tool No: 867 & DC0006

Shape: Square

Cut Size -

Width: 200mm

Height: 200mm

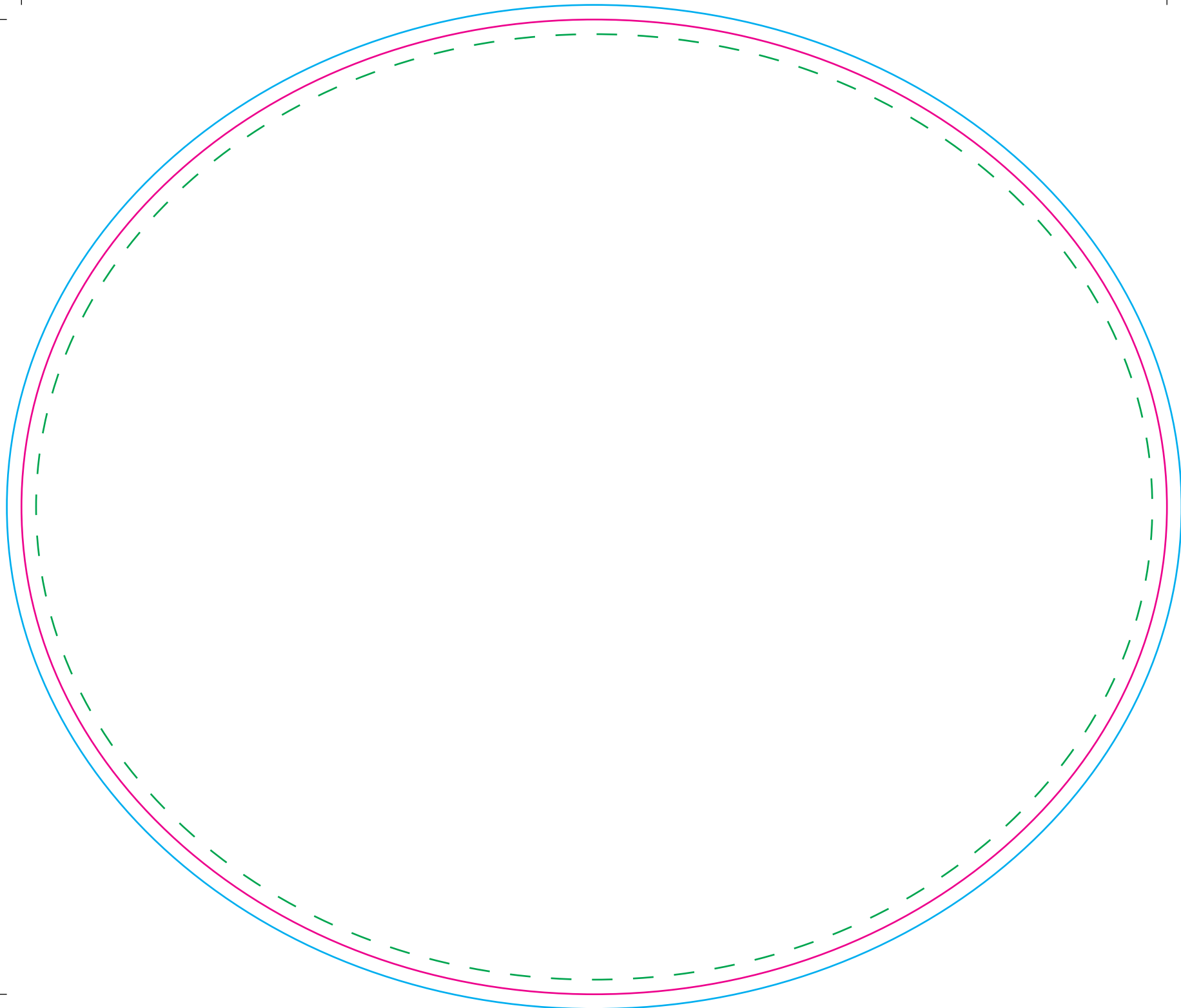
Artwork with Bleed -

Width: 206mm

Height: 206mm

- - - Please keep all live matter such as text, logos and other important images within this area.

This dieline represents a current finishing tool. Any alterations to this dieline may incur additional charges.

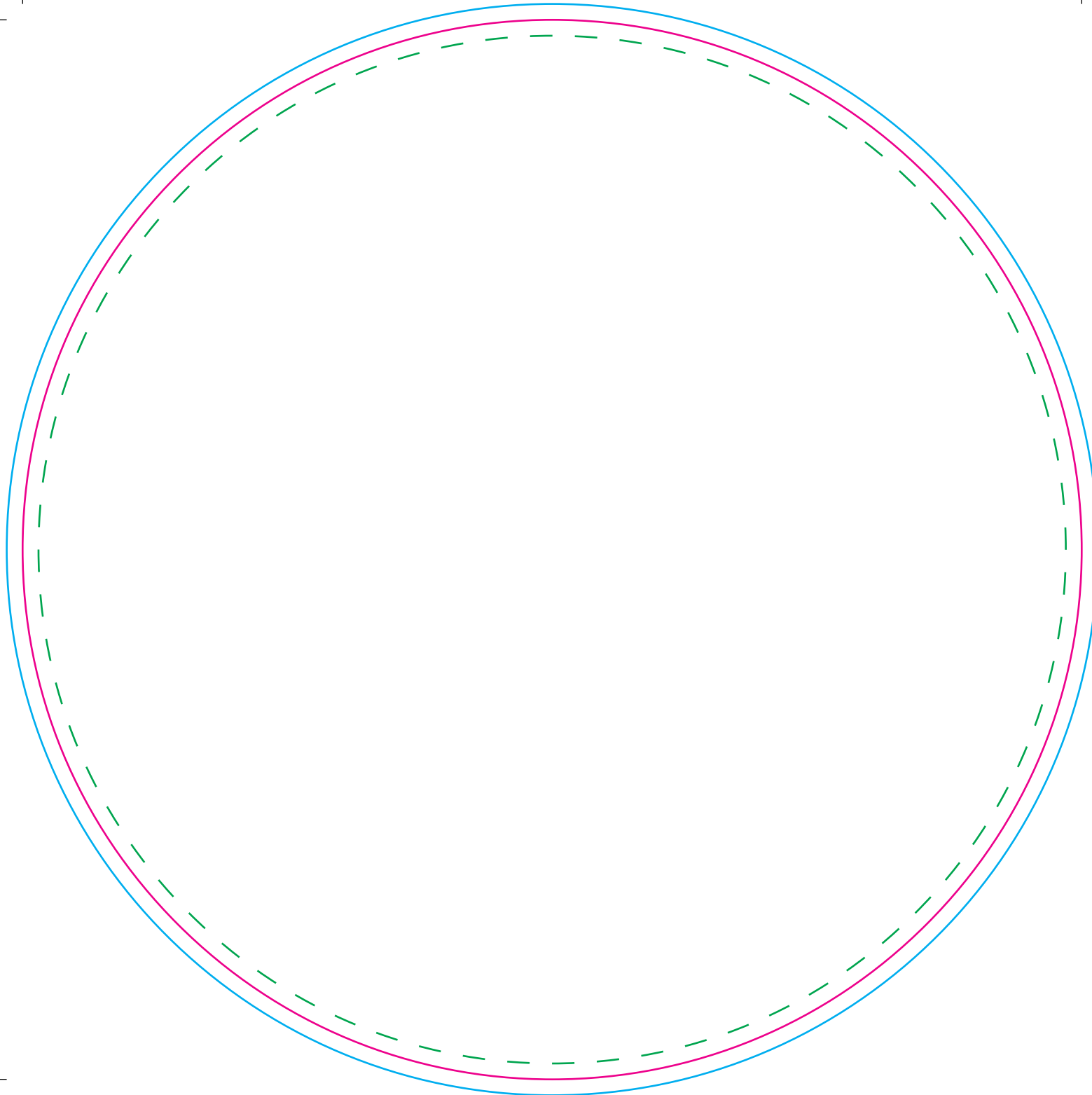


Mat

Tool No:	1090 & DC0173
Shape:	Oval
Cut Size -	
Width:	235mm
Height:	200mm
Artwork with Bleed -	
Width:	241mm
Height:	206mm

--- Please keep all live matter such as text, logos and other important images within this area.

This dieline represents a current finishing tool. Any alterations to this dieline may incur additional charges.



Mat

Tool No: 862 & DC0005

Shape: Circle

Cut Size -

Width: 200mm

Height: 200mm

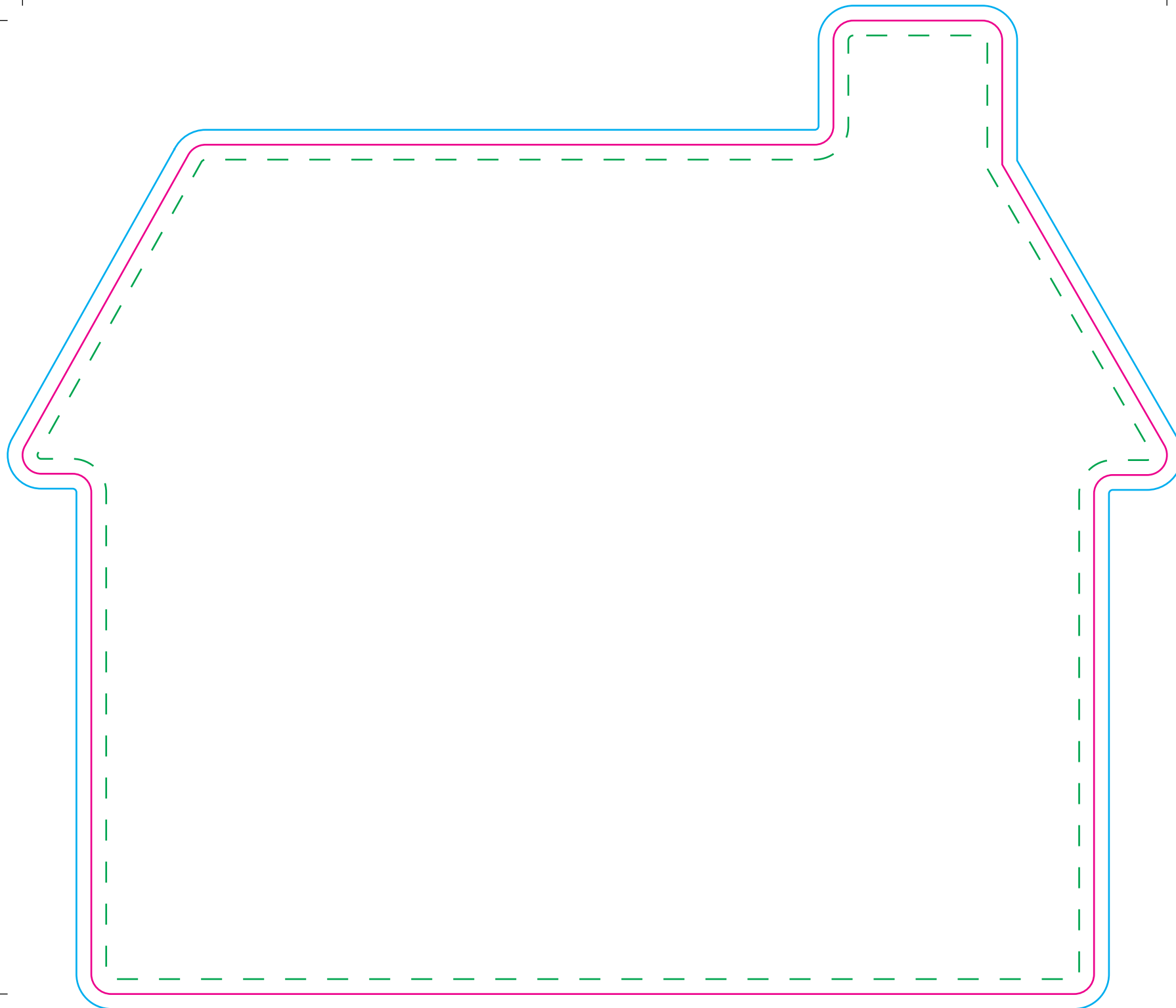
Artwork with Bleed -

Width: 206mm

Height: 206mm

- - - Please keep all live matter such as text, logos and other important images within this area.

This dieline represents a current finishing tool. Any alterations to this dieline may incur additional charges.



Mat

Tool No: 3591 & DC0221
Shape: House - Chimney Right

Cut Size -

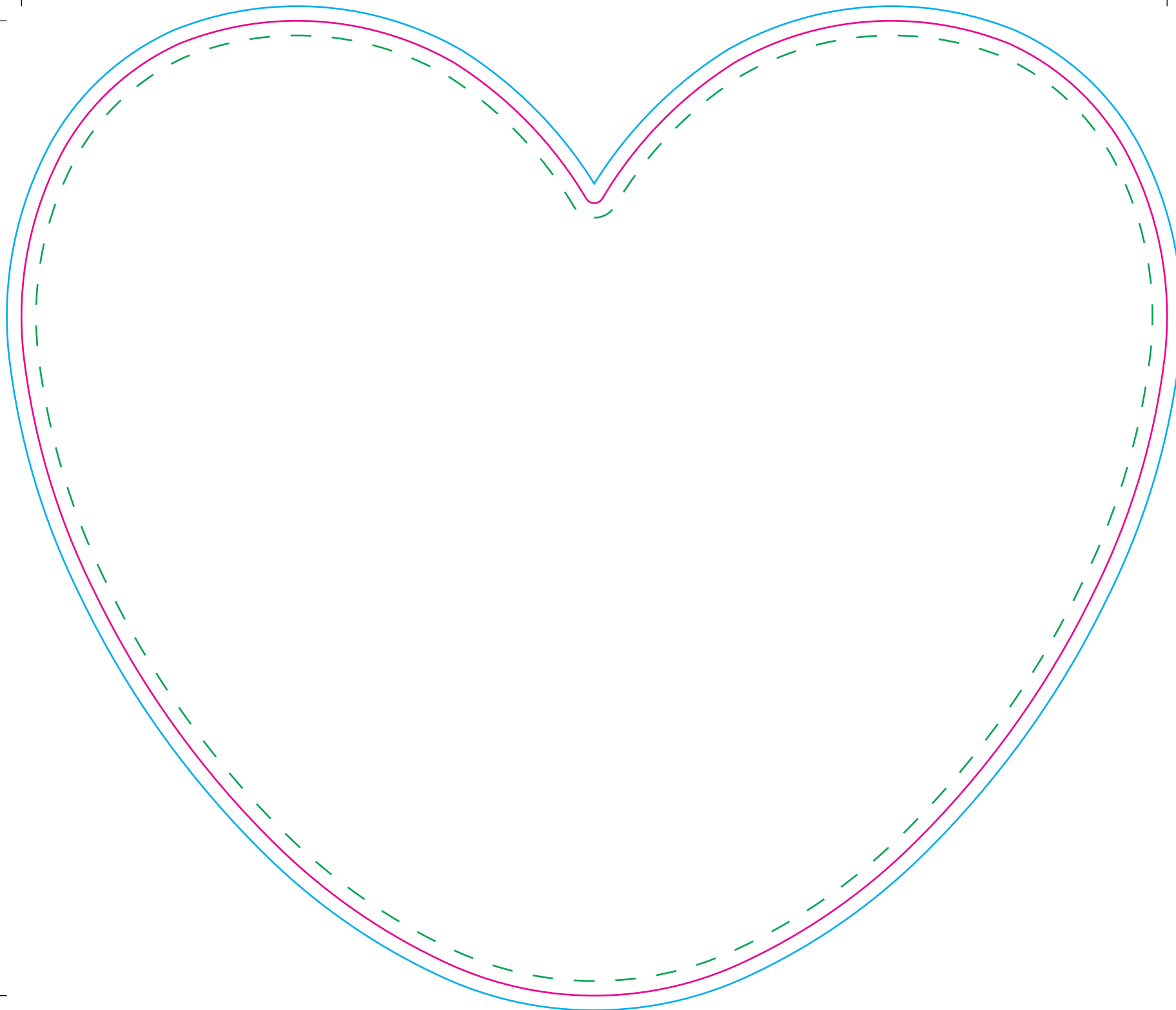
Width: 230.5mm
Height: 196mm

Artwork with Bleed -

Width: 236.5mm
Height: 202mm

--- Please keep all live matter such as text, logos and other important images within this area.

This dieline represents a current finishing tool. Any alterations to this dieline may incur additional charges.

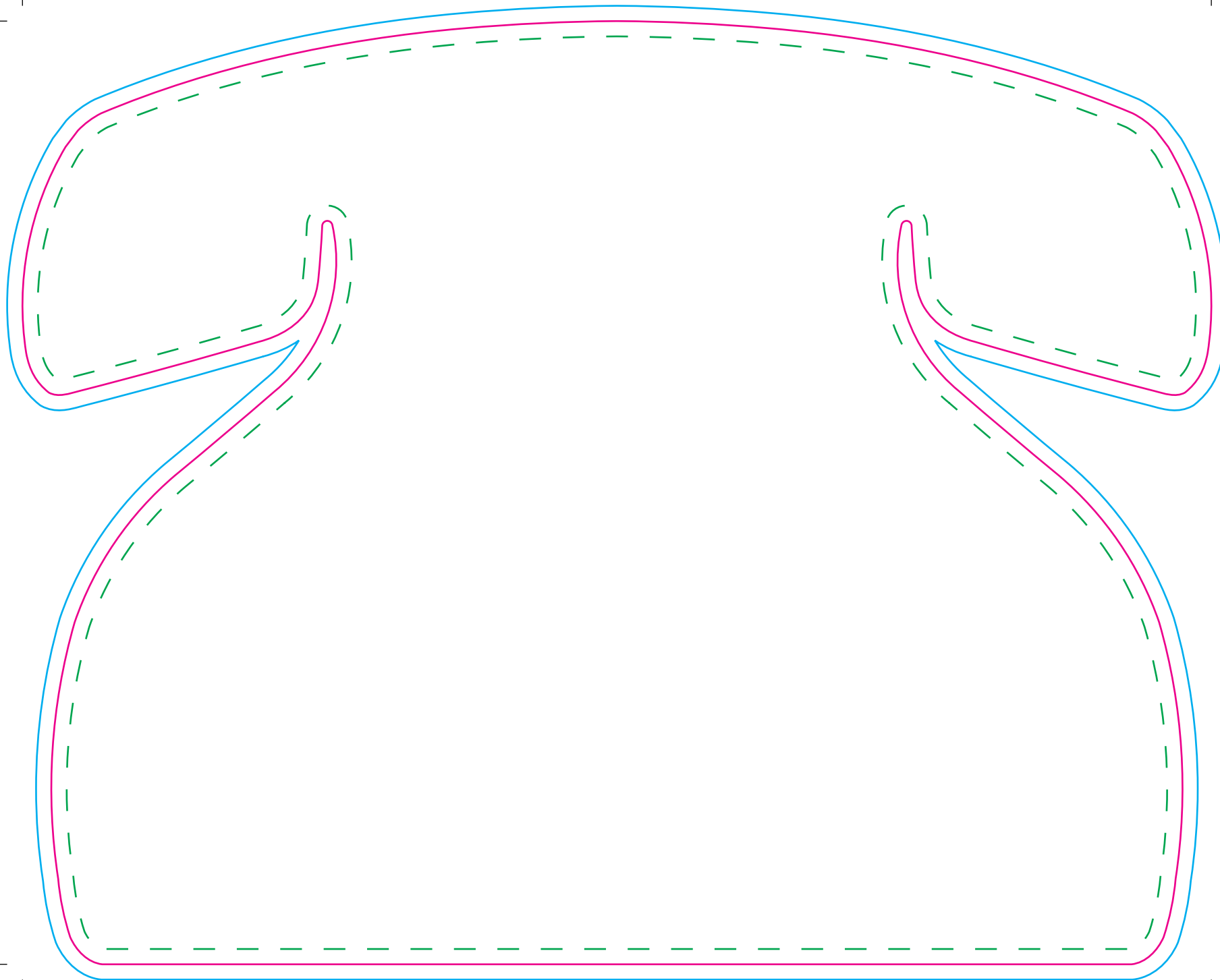


Mat

Tool No:	3489 & DC0312
Shape:	Heart
Product Size -	
Width:	235mm
Height:	200mm
Artwork with Bleed -	
Width:	241mm
Height:	206mm

--- Please keep all live matter such as text, logos and other important images within this area.

This dieline represents a current finishing tool. Any alterations to this dieline may incur additional charges.



Mat

Tool No: 2423 & DC0067

Shape: Telephone

Cut Size -

Width: 233mm

Height: 185mm

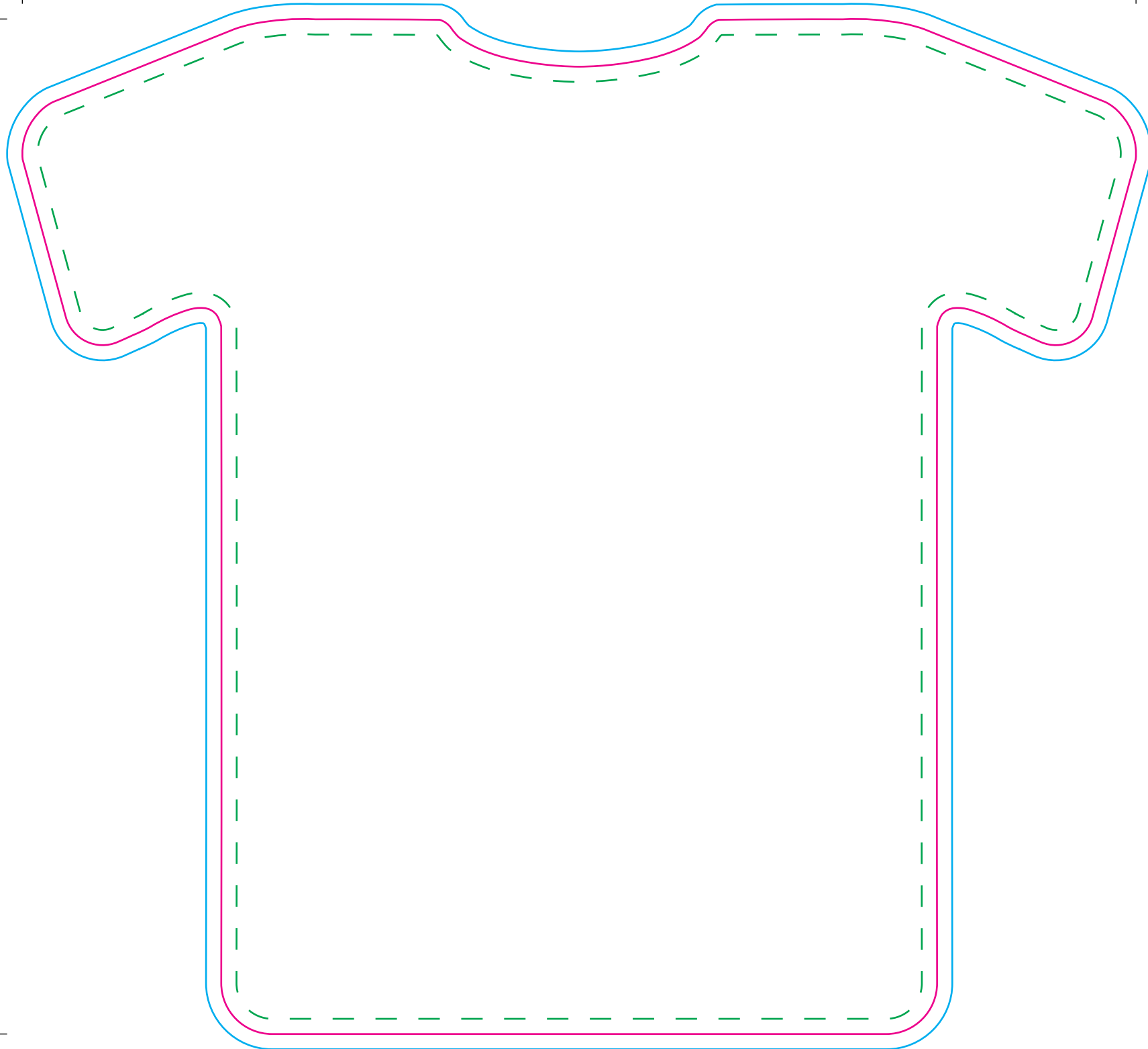
Artwork with Bleed -

Width: 239mm

Height: 191mm

- - - Please keep all live matter such as text, logos and other important images within this area.

This dieline represents a current finishing tool. Any alterations to this dieline may incur additional charges.



Mat

Tool No: 3375 & DC0056

Shape: Football Shirt

Cut Size -

Width: 219.5mm

Height: 200mm

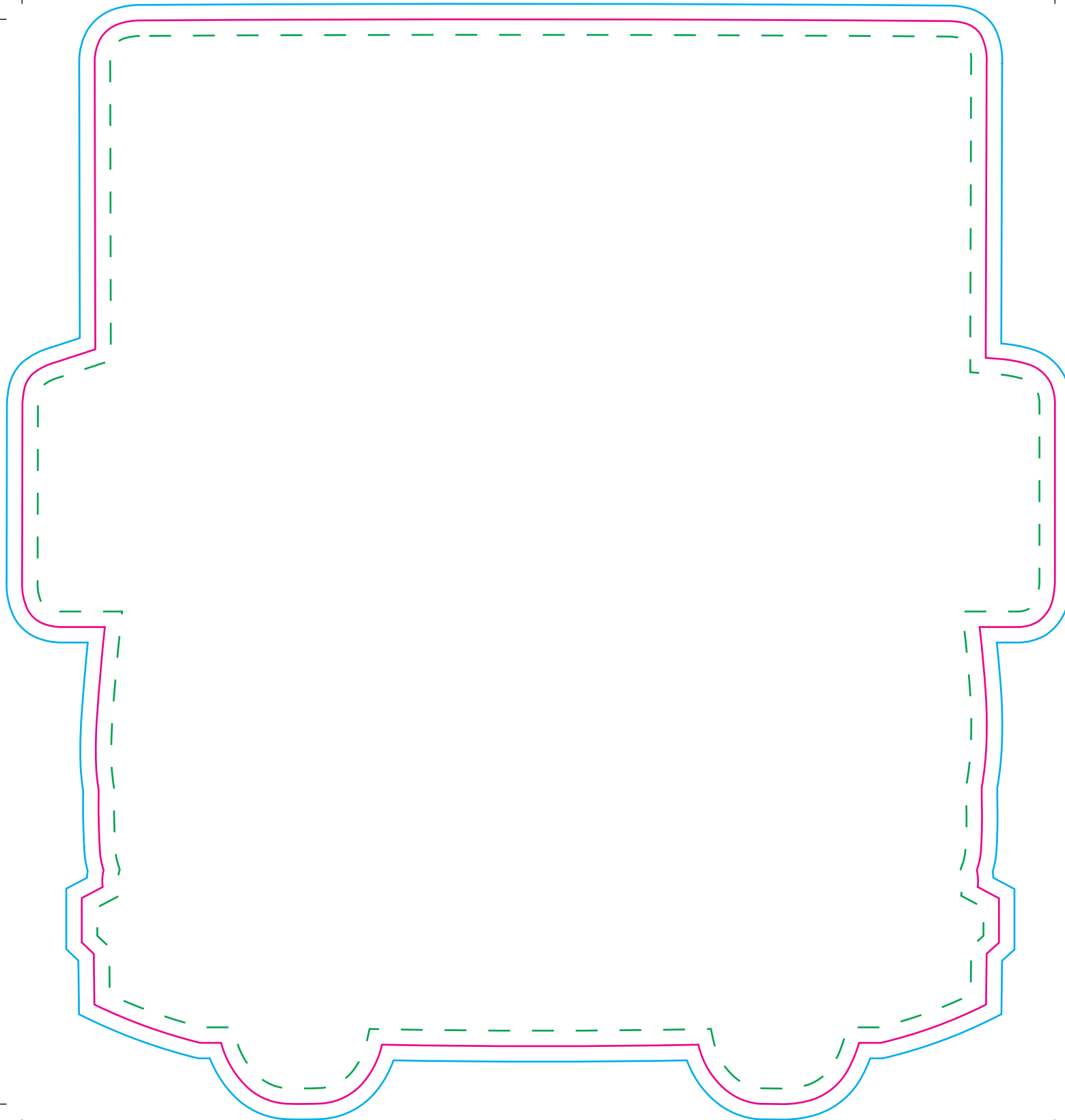
Artwork with Bleed -

Width: 225.5mm

Height: 206mm

--- Please keep all live matter such as text, logos and other important images within this area.

This dieline represents a current finishing tool. Any alterations to this dieline may incur additional charges.



Mat

Tool No: 3682 & DC0146

Shape: Lorry

Cut Size -

Width: 200mm

Height: 210mm

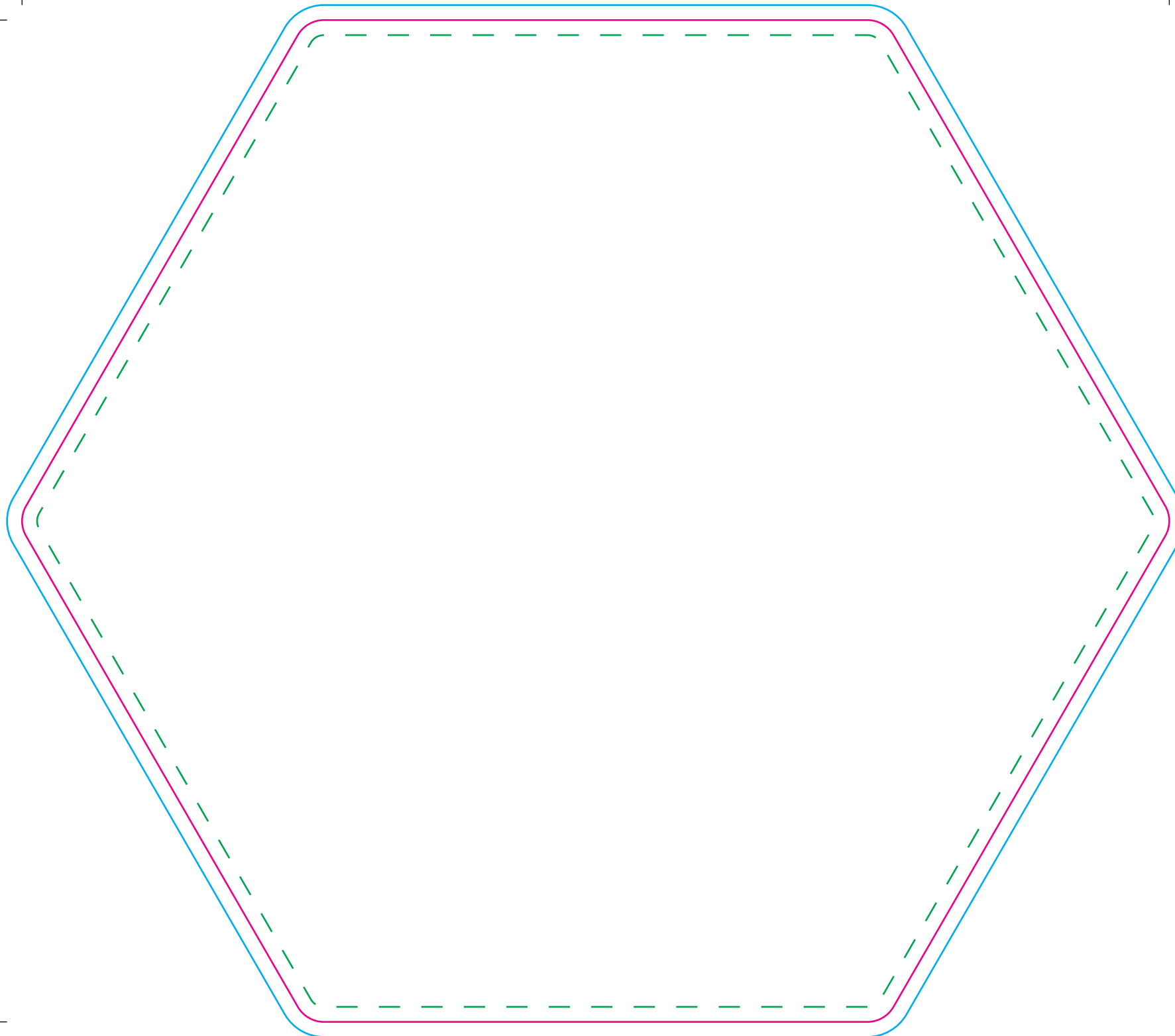
Artwork with Bleed -

Width: 206mm

Height: 216mm

- - - Please keep all live matter such as text, logos and other important images within this area.

This dieline represents a current finishing tool. Any alterations to this dieline may incur additional charges.



Mat

Tool No: 2160 • DC0262 • (2228KA)

Shape: Hexagon

Cut Size -

Width: 229mm

Height: 200mm

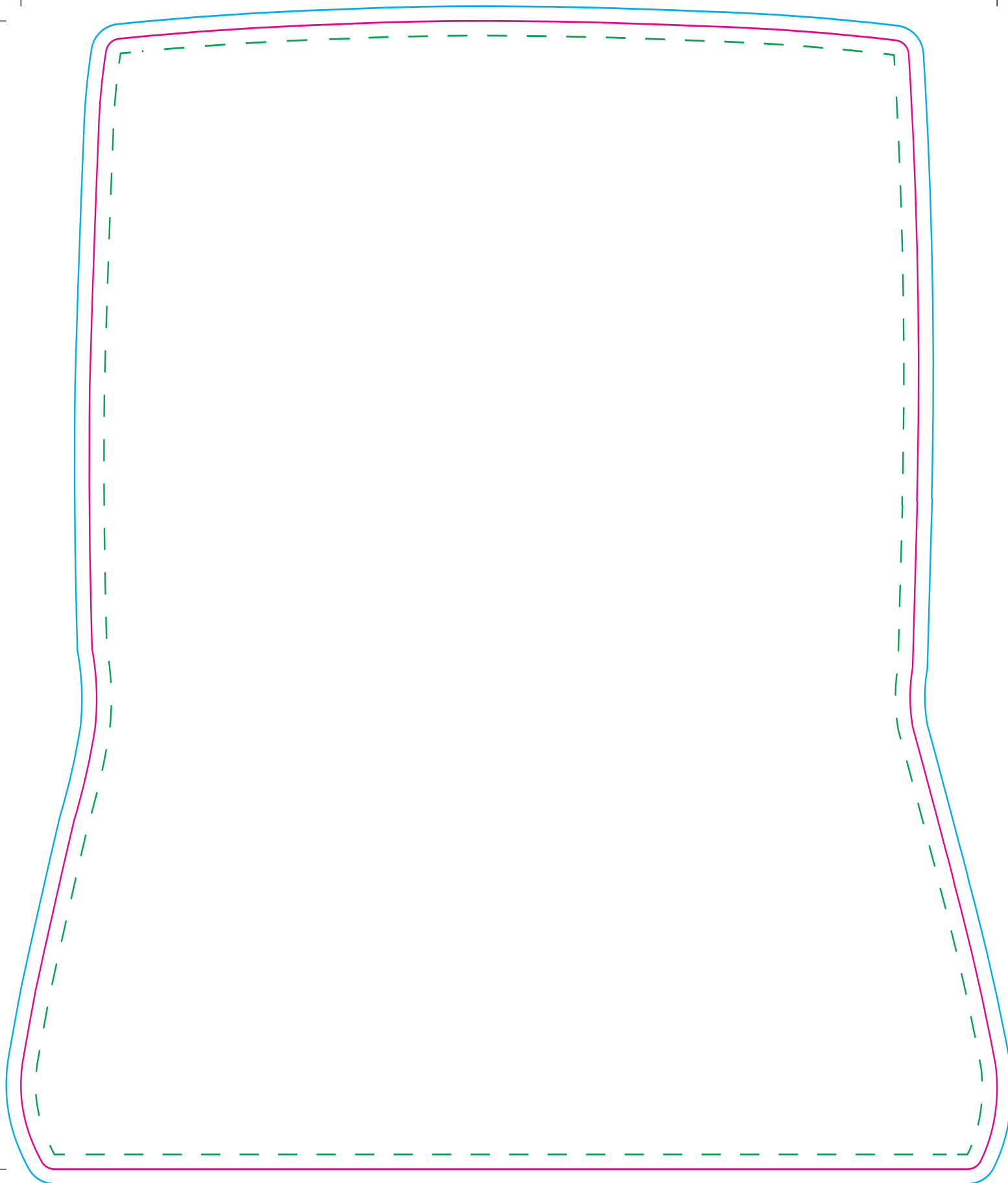
Artwork with Bleed -

Width: 235mm

Height: 206mm

- - - Please keep all live matter such as text, logos and other important images within this area.

This dieline represents a current finishing tool. Any alterations to this dieline may incur additional charges.



Mat

Tool No: 1996 • DC0434

Shape: Laptop

Cut Size -

Width: 199mm

Height: 234mm

Artwork with Bleed -

Width: 205mm

Height: 240mm

- - - Please keep all live matter such as text, logos and other important images within this area.

This dieline represents a current finishing tool. Any alterations to this dieline may incur additional charges.



Mat

Tool No:	3338 • DC0327
Shape:	Pillow
Cut Size -	
Width:	235mm
Height:	201mm
Artwork with Bleed -	
Width:	241mm
Height:	207mm

--- Please keep all live matter such as text, logos and other important images within this area.

This dieline represents a current finishing tool. Any alterations to this dieline may incur additional charges.