

## StickyMat

Exceptionally thin non-slip, light weight mouse mat constructed from an adhesive base and mark resist PVC top. Release the backing paper to expose the adhesive base which can be literally stuck to the desk but easily removed and re-positioned over and over again. Ideal for mailings and maximum promotional exposure.



## Key Product Information

|                              |                                       |
|------------------------------|---------------------------------------|
| Product Code:                | 11023                                 |
| Commodity Code:              | 39269092                              |
| MOQ:                         | 100                                   |
| Size:                        | See Artwork Requirements              |
| Thickness:                   | 0.5mm                                 |
| Print Area:                  | Within dimensions                     |
| Print Type:                  | Screen Print or 4 Colour Process      |
| Material:                    | Adhesive base and mark resist PVC top |
| Source:                      | UK                                    |
| PDF proof lead time:         | 24-48 Hours                           |
| Express Service:             | Please call for details               |
| Printed proof (if required): | 3 Working Days                        |
| Production lead time:        | 10 Working days from proof approval   |
| Standard colours:            | N/A                                   |
| Weight:                      | 34g                                   |

## Packaging

|                        |   |
|------------------------|---|
| Number per carton:     | 800   |
| Carton Dimension:      | 405 x 340 x 220mm   |
| Carton Weight:         | 27.2Kg  |
| Standard Packaging:    | Bulk packed   |
| Alternative Packaging: | Mailing Sleeves, Shrink Wrapped, Bag with Header Card, Envelope |

## Recommendations & Limitations

As with all products with an adhesive base, we do not recommend sticking this mat to a natural wood or highly varnished surface.

Ideal for: Postal Campaigns, IT Companies, Educational Organisations, Pharmaceutical, Recruitment

## StickyMat

Sizes available: Rectangle 200mm x 235mm, Square 200mm x 200mm, Oval 200mm x 235mm, Circle 200mm diameter, House 230mm x 195mm, Heart 200mm x 235mm, Phone 233mm x 185mm, T-Shirt 220mm x 200mm, Truck 200mm x 210mm, Hexagon 230mm x 200mm, Laptop 200mm x 235mm, Pillow 200mm x 235mm

### Screen Print:

- Editable EPS file
- Image saved at 100% size or larger
- Pantone® references supplied for colours
- Fonts supplied or text saved as curves

### Full colour:

- All graphics should be supplied as highresolution CMYK files at a minimum of 300dpi
- All design components must be supplied and clearly identified. This includes Tiff, EPS and PDF files; all printer fonts used in the main file & imported graphics.

### Regardless of print method:

- Allow 5mm bleed all around the design.
- Artwork to be emailed with your order number and company name in the reference line or supplied on CD with same information clearly labelled.

Full detailed guidelines including limitations & recommendations are available for each printing method on request.

QR Codes - Please note that the print process and substrates used in the production of this item may not always allow QR codes, if present on your artwork, to function correctly. When approving your proof, you are accepting that this may be the case and as such accept full liability for any malfunction of the QR code.

See the following page(s) for the artwork templates for this product.

All information correct at time of publication. Whilst we endeavour to maintain the accuracy of this document, details may change without notice.

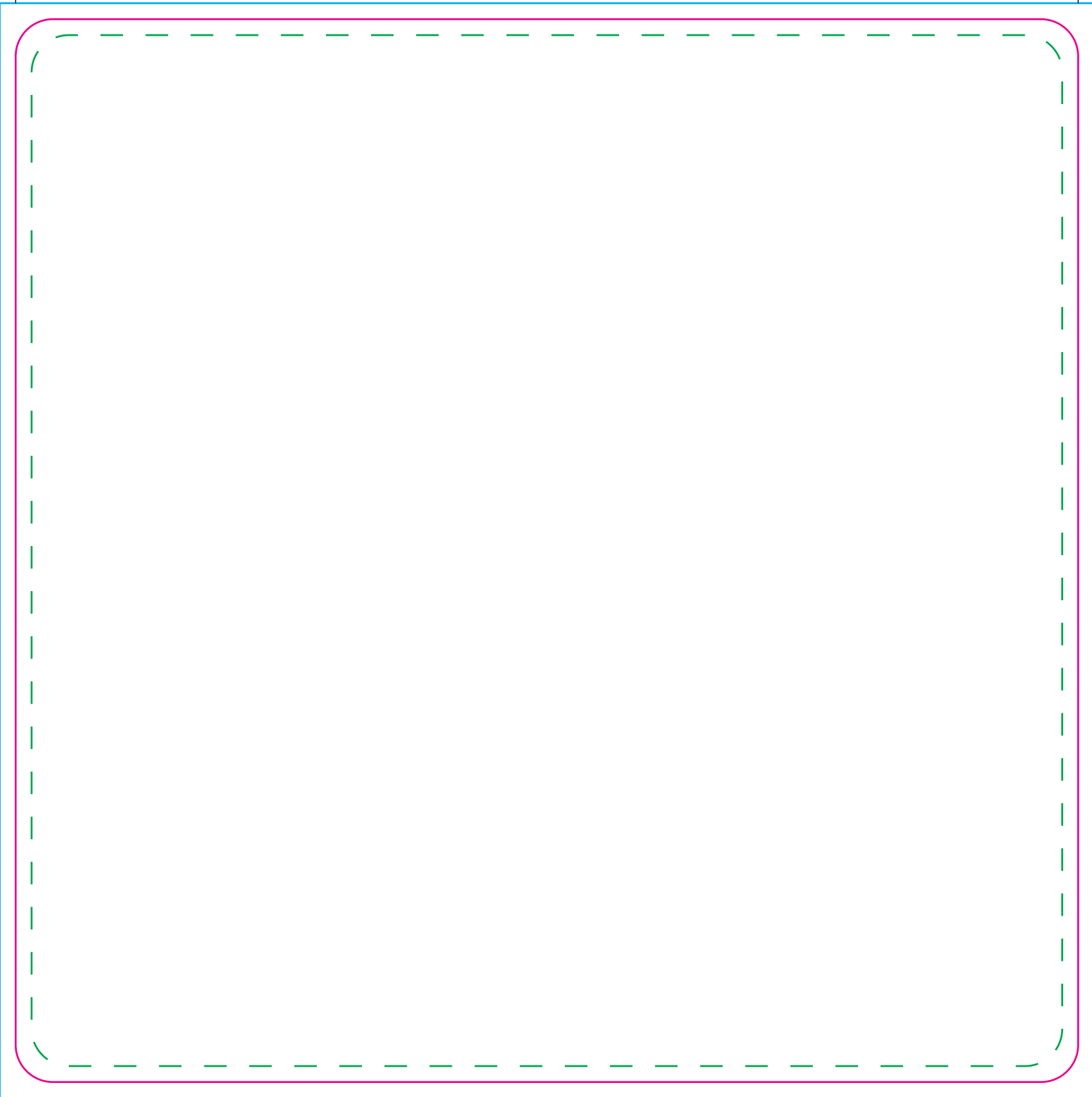


**Standard Mat**

|                             |           |
|-----------------------------|-----------|
| <b>Tool No:</b>             | 235       |
| <b>Shape:</b>               | Rectangle |
| <b>Cut Size -</b>           |           |
| <b>Width:</b>               | 235mm     |
| <b>Height:</b>              | 200mm     |
| <b>Artwork with Bleed -</b> |           |
| <b>Width:</b>               | 241mm     |
| <b>Height:</b>              | 206mm     |

**--- Please keep all live matter such as text, logos and other important images within this area.**

**This dieline represents a current finishing tool. Any alterations to this dieline may incur additional charges.**



## Mat

**Tool No:** 867 & DC0006

**Shape:** Square

**Cut Size -**

**Width:** 200mm

**Height:** 200mm

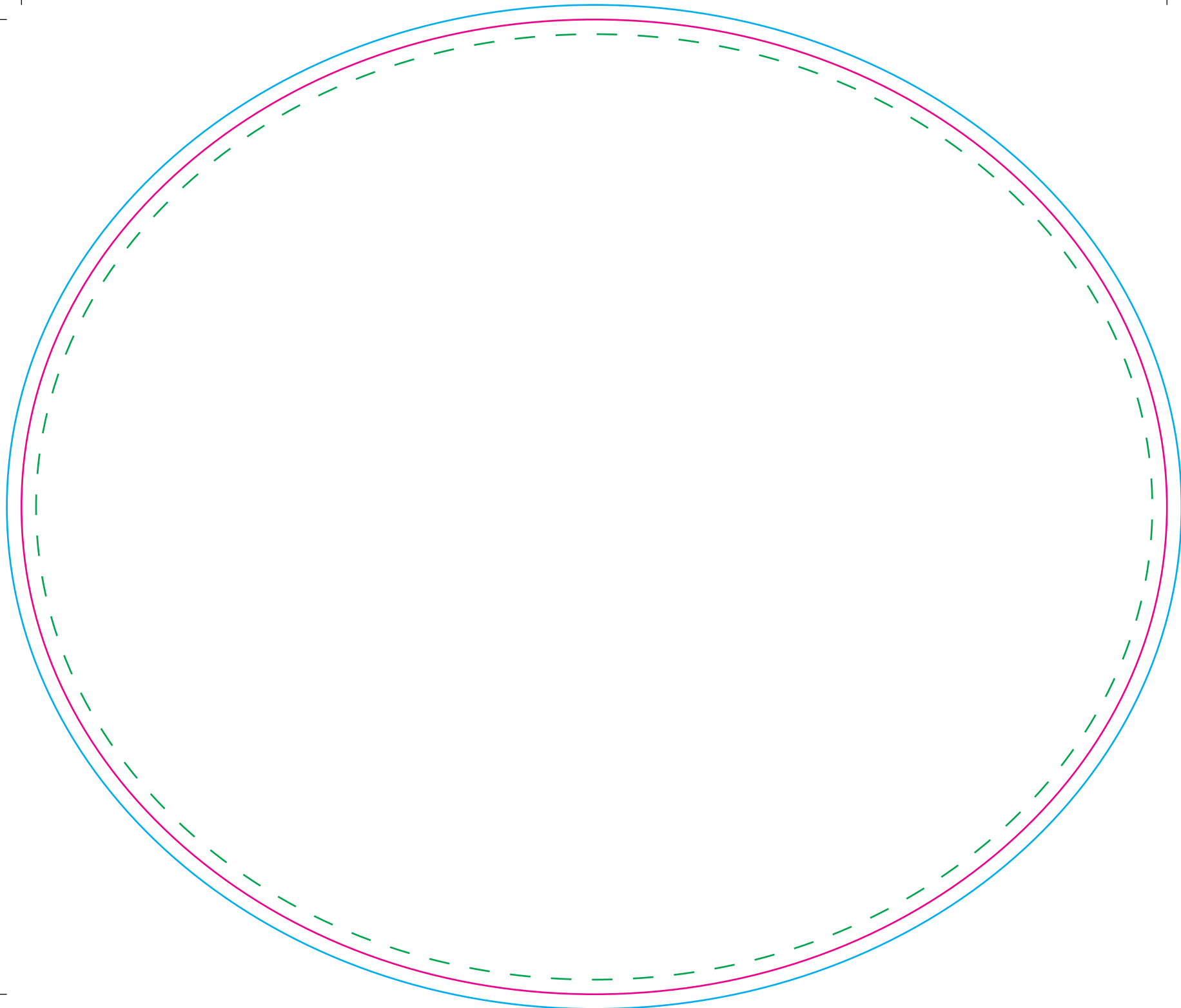
**Artwork with Bleed -**

**Width:** 206mm

**Height:** 206mm

- - - Please keep all live matter such as text, logos and other important images within this area.

**This dieline represents a current finishing tool. Any alterations to this dieline may incur additional charges.**

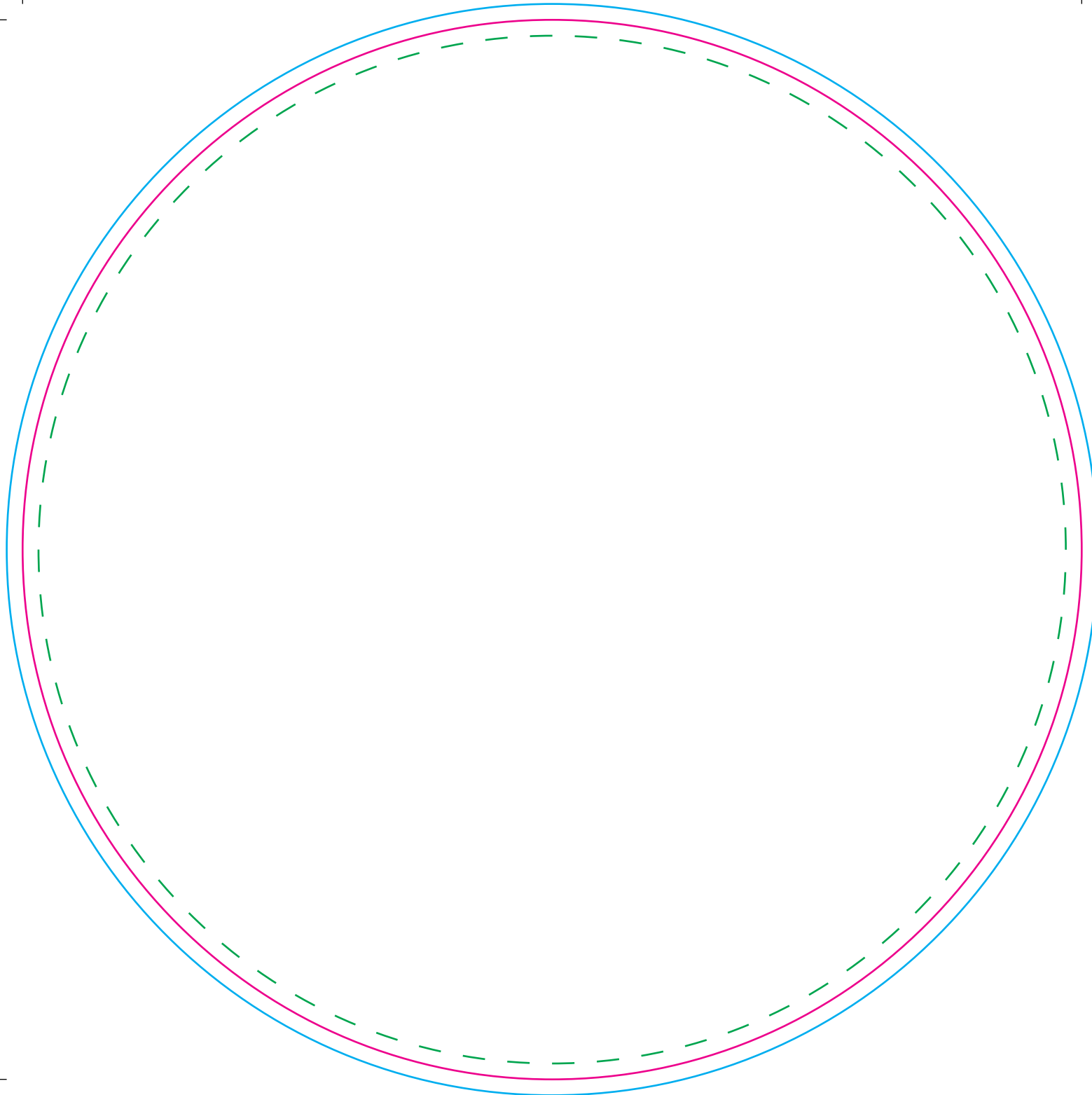


**Mat**

|                             |               |
|-----------------------------|---------------|
| <b>Tool No:</b>             | 1090 & DC0173 |
| <b>Shape:</b>               | Oval          |
| <b>Cut Size -</b>           |               |
| <b>Width:</b>               | 235mm         |
| <b>Height:</b>              | 200mm         |
| <b>Artwork with Bleed -</b> |               |
| <b>Width:</b>               | 241mm         |
| <b>Height:</b>              | 206mm         |

--- Please keep all live matter such as text, logos and other important images within this area.

**This dieline represents a current finishing tool. Any alterations to this dieline may incur additional charges.**



## Mat

**Tool No:** 862 & DC0005

**Shape:** Circle

**Cut Size -**

**Width:** 200mm

**Height:** 200mm

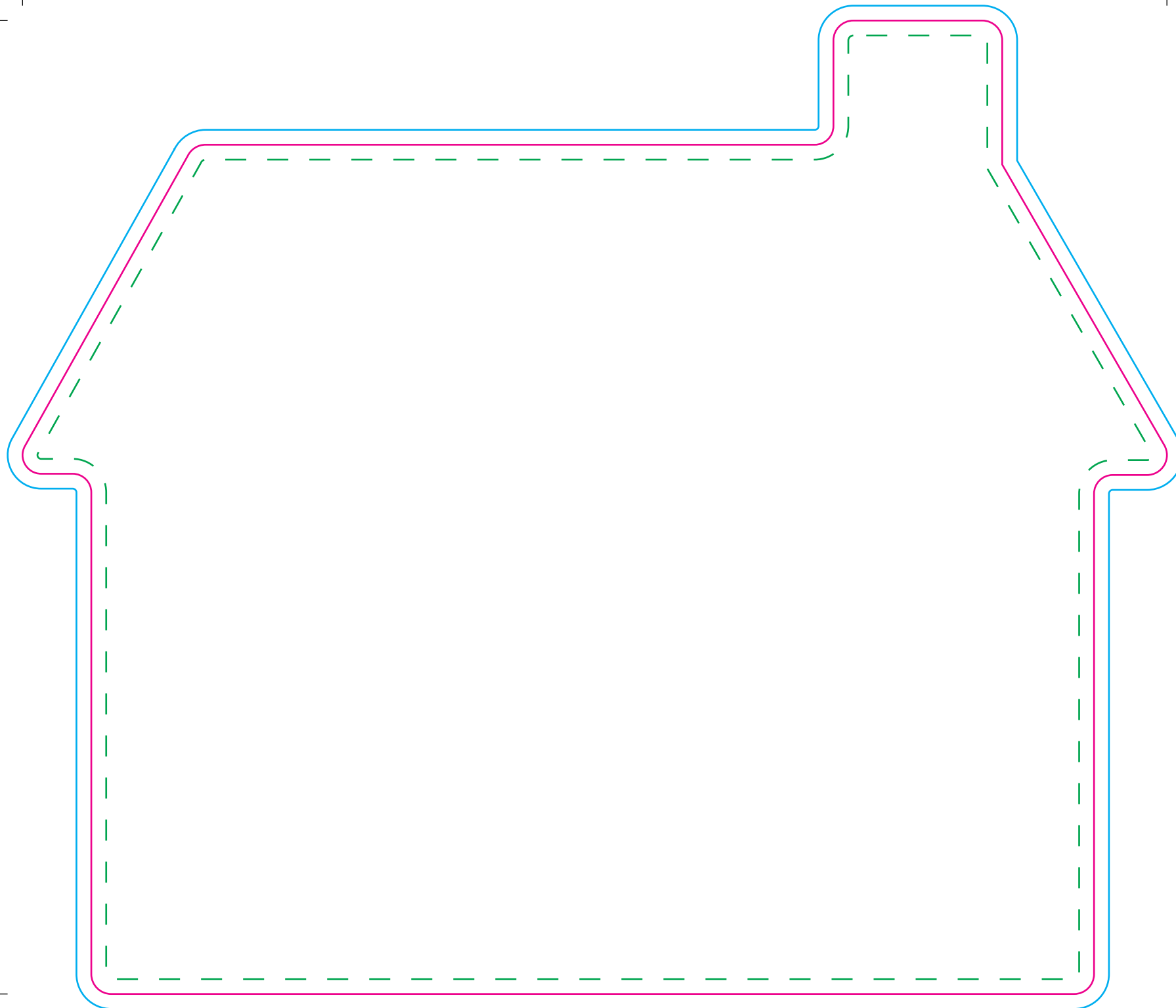
**Artwork with Bleed -**

**Width:** 206mm

**Height:** 206mm

**- - - Please keep all live matter such as text, logos and other important images within this area.**

**This dieline represents a current finishing tool. Any alterations to this dieline may incur additional charges.**



## Mat

**Tool No:** 3591 & DC0221  
**Shape:** House - Chimney Right

### Cut Size -

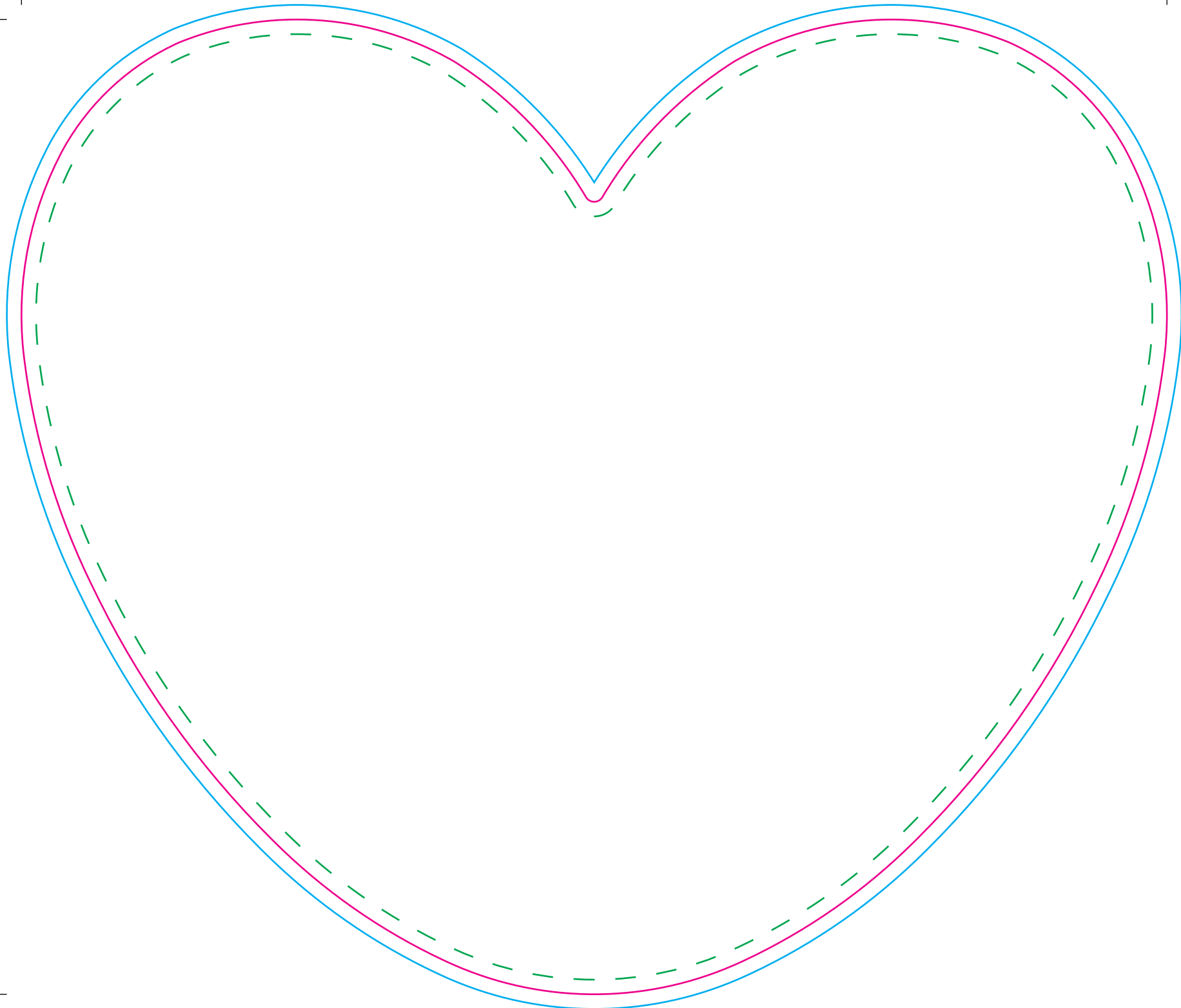
**Width:** 230.5mm  
**Height:** 196mm

### Artwork with Bleed -

**Width:** 236.5mm  
**Height:** 202mm

--- Please keep all live matter such as text, logos and other important images within this area.

This dieline represents a current finishing tool. Any alterations to this dieline may incur additional charges.



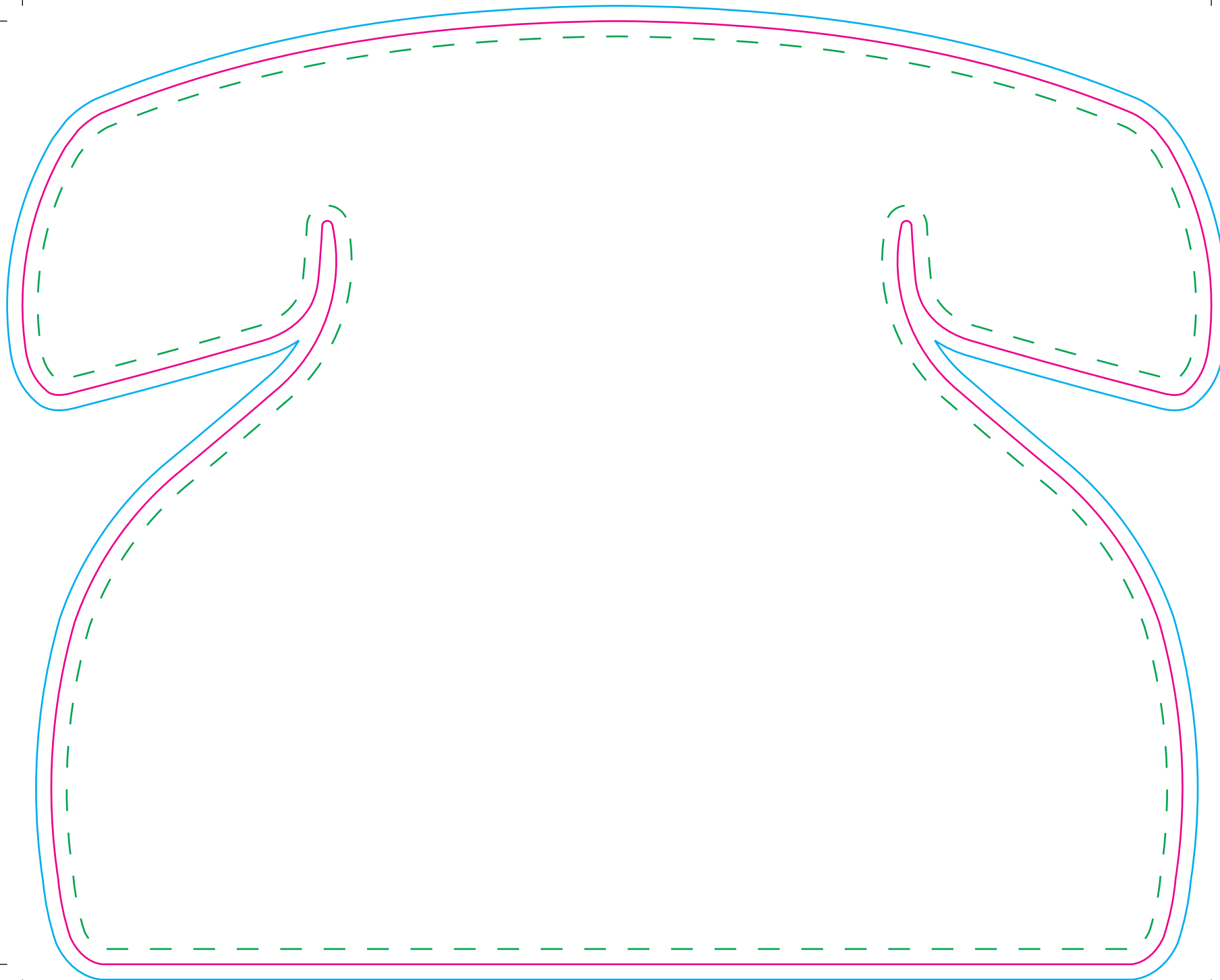
**Mat**

|                             |               |
|-----------------------------|---------------|
| <b>Tool No:</b>             | 3489 & DC0312 |
| <b>Shape:</b>               | Heart         |
| <b>Product Size -</b>       |               |
| <b>Width:</b>               | 235mm         |
| <b>Height:</b>              | 200mm         |
| <b>Artwork with Bleed -</b> |               |
| <b>Width:</b>               | 241mm         |
| <b>Height:</b>              | 206mm         |

--- Please keep all live matter such as text, logos and other important images within this area.

**This dieline represents a current finishing tool. Any alterations to this dieline may incur additional charges.**





## Mat

**Tool No:** 2423 & DC0067

**Shape:** Telephone

**Cut Size -**

**Width:** 233mm

**Height:** 185mm

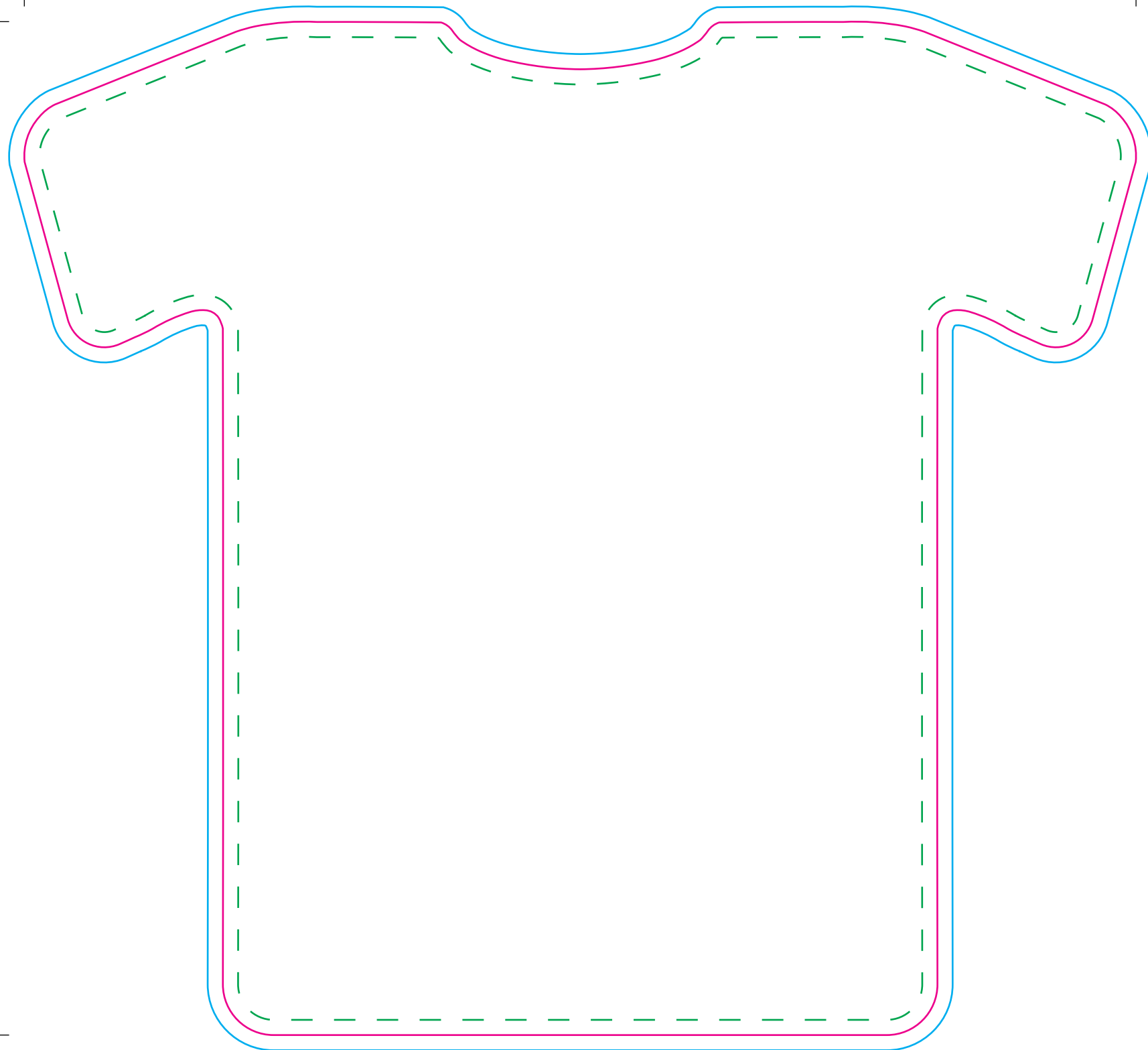
**Artwork with Bleed -**

**Width:** 239mm

**Height:** 191mm

- - - Please keep all live matter such as text, logos and other important images within this area.

**This dieline represents a current finishing tool. Any alterations to this dieline may incur additional charges.**



## Mat

**Tool No:** 3375 & DC0056

**Shape:** Football Shirt

**Cut Size -**

**Width:** 219.5mm

**Height:** 200mm

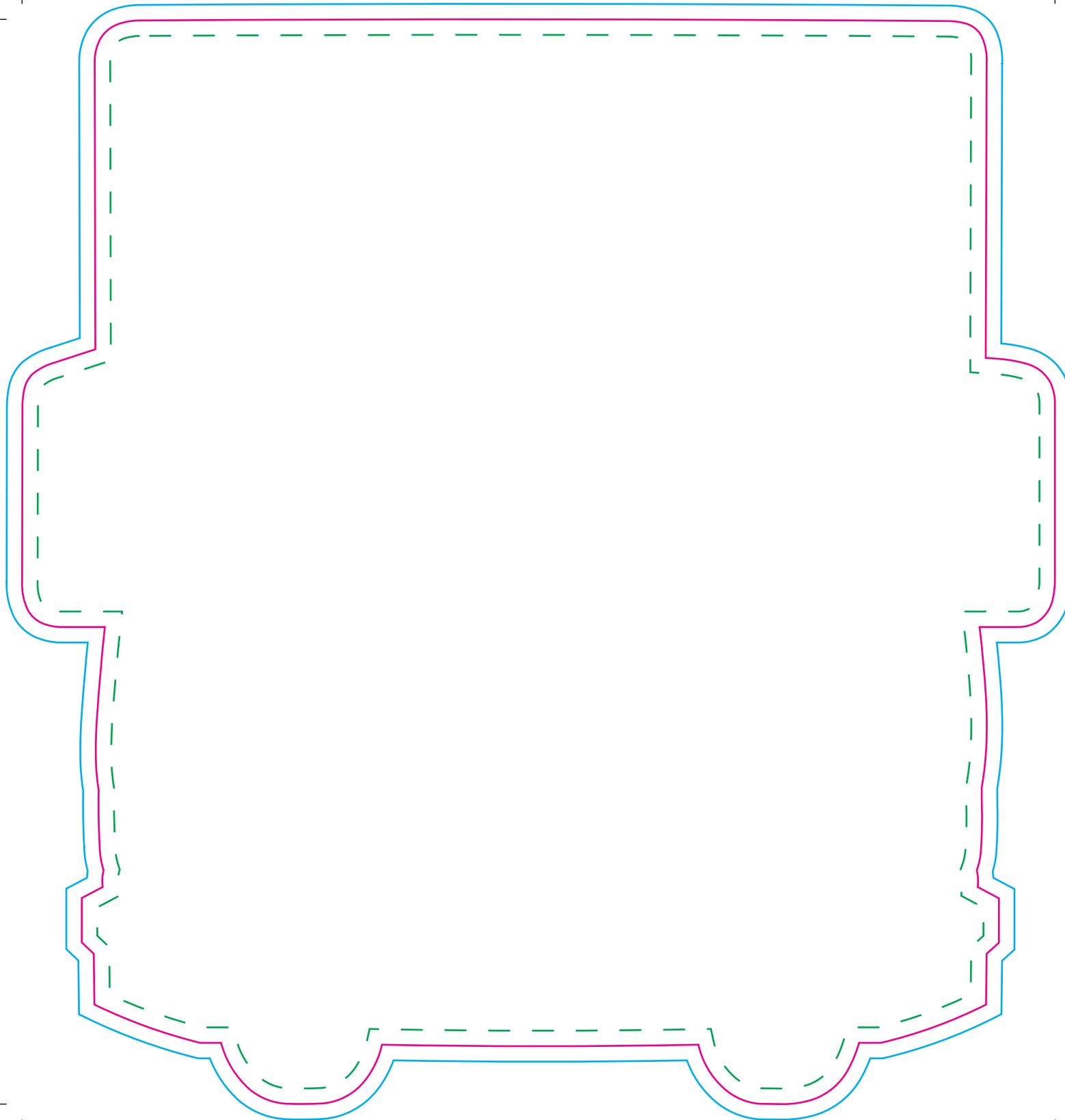
**Artwork with Bleed -**

**Width:** 225.5mm

**Height:** 206mm

--- Please keep all live matter such as text, logos and other important images within this area.

**This dieline represents a current finishing tool. Any alterations to this dieline may incur additional charges.**



## Mat

**Tool No:** 3682 & DC0146

**Shape:** Lorry

**Cut Size -**

**Width:** 200mm

**Height:** 210mm

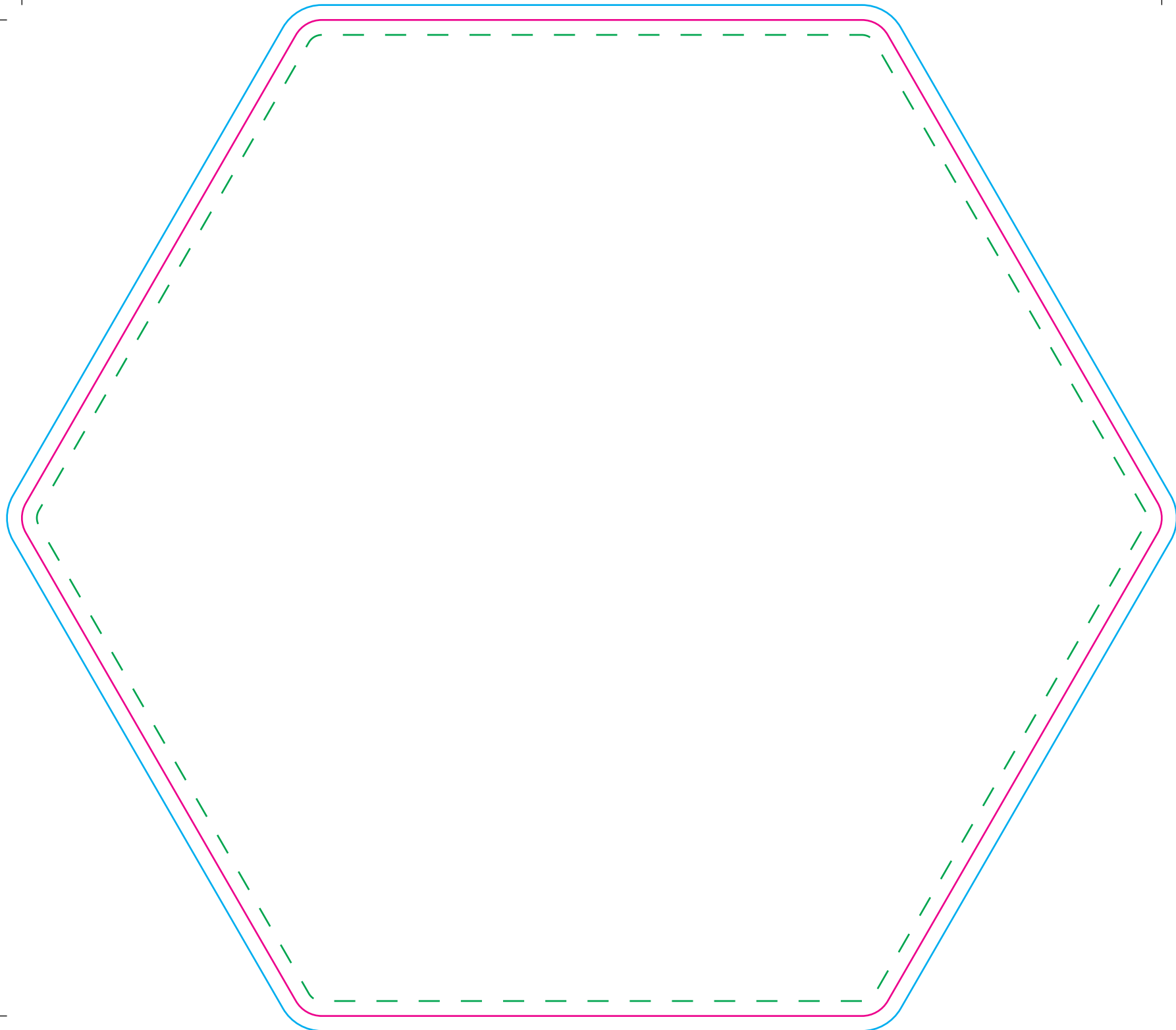
**Artwork with Bleed -**

**Width:** 206mm

**Height:** 216mm

- - - Please keep all live matter such as text, logos and other important images within this area.

**This dieline represents a current finishing tool. Any alterations to this dieline may incur additional charges.**



**Mat**

**Tool No:** 2160 • DC0262 • (2228KA)

**Shape:** Hexagon

**Cut Size -**

**Width:** 229mm

**Height:** 200mm

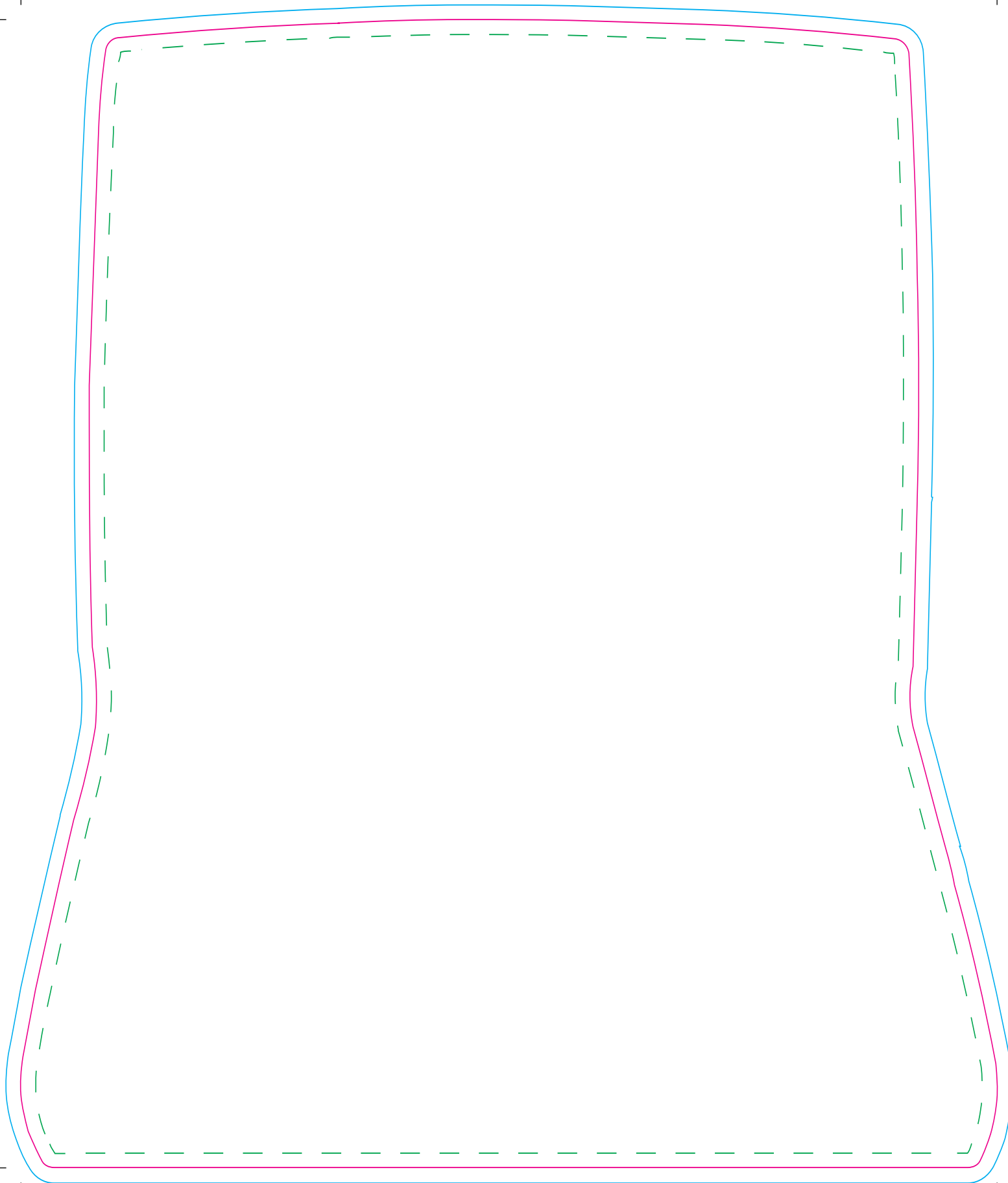
**Artwork with Bleed -**

**Width:** 235mm

**Height:** 206mm

- - - Please keep all live matter such as text, logos and other important images within this area.

**This dieline represents a current finishing tool. Any alterations to this dieline may incur additional charges.**



## Mat

**Tool No:** 1996 • DC0434

**Shape:** Laptop

**Cut Size -**

**Width:** 199mm

**Height:** 234mm

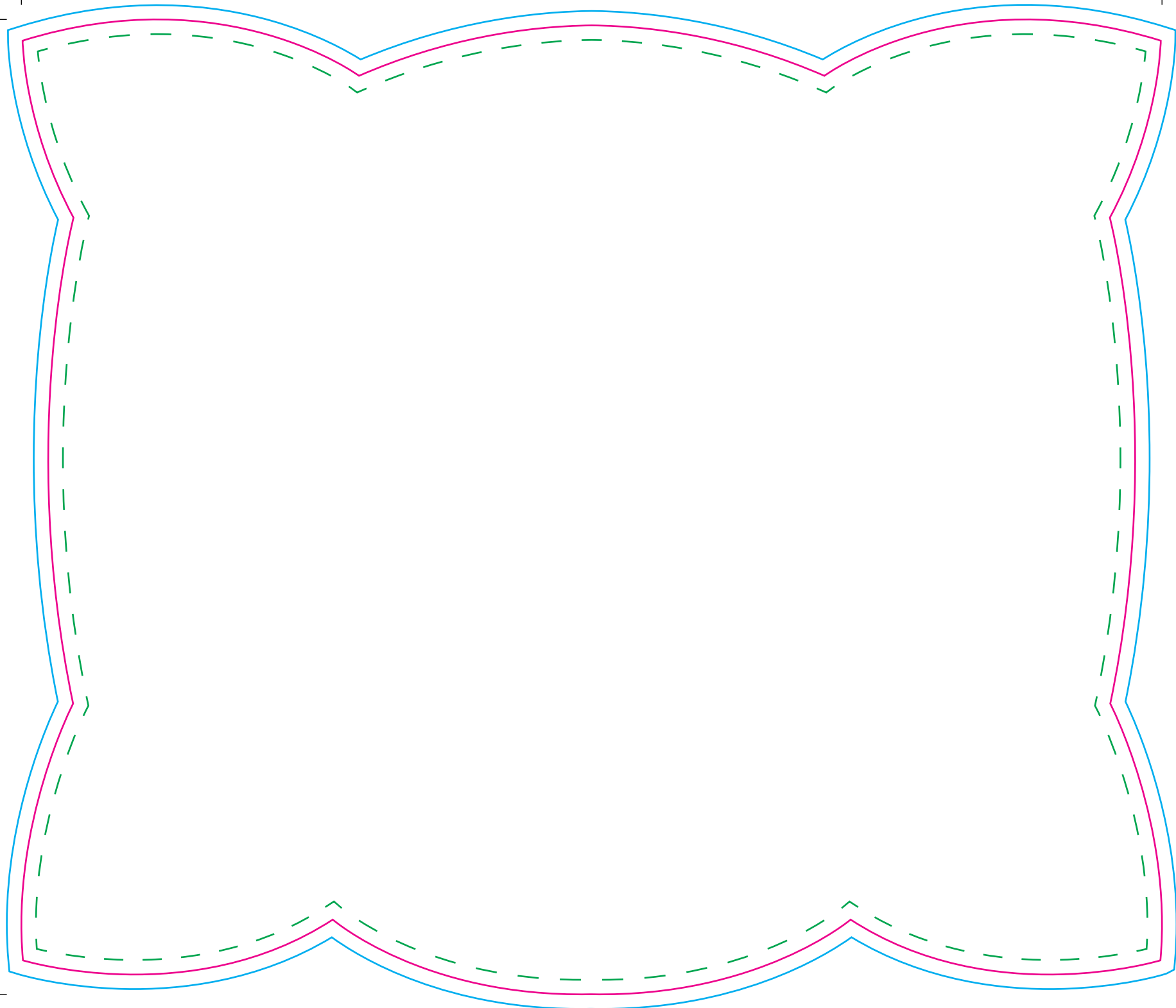
**Artwork with Bleed -**

**Width:** 205mm

**Height:** 240mm

- - - Please keep all live matter such as text, logos and other important images within this area.

**This dieline represents a current finishing tool. Any alterations to this dieline may incur additional charges.**



**Mat**

|                             |               |
|-----------------------------|---------------|
| <b>Tool No:</b>             | 3338 • DC0327 |
| <b>Shape:</b>               | Pillow        |
| <b>Cut Size -</b>           |               |
| <b>Width:</b>               | 235mm         |
| <b>Height:</b>              | 201mm         |
| <b>Artwork with Bleed -</b> |               |
| <b>Width:</b>               | 241mm         |
| <b>Height:</b>              | 207mm         |

--- Please keep all live matter such as text, logos and other important images within this area.

**This dieline represents a current finishing tool. Any alterations to this dieline may incur additional charges.**