

PhotoMat

Superior HardTop mat which allows the user to insert their favourite photograph via a clever slot cut into the foam backing. Mouse mats provide a prime advertising space for under 1p per day; no other advertising medium gives you such value.



Key Product Information

Product Code:	11004PHO
Commodity Code:	39269092
MOQ:	100
Size:	See Artwork Requirements
Thickness:	3mm or 5mm
Print Area:	Within dimensions. The standard window (centred) is 153 x 102mm & holds 6" x 4" photos.
Print Type:	Screen Print or 4 Colour Process
Material:	PVC laminated to a foam base
Source:	UK
PDF proof lead time:	24-48 Hours
Express Service:	Not Available
Printed proof (if required):	3 Working days
Production lead time:	10 Working days from proof approval
Standard colours:	N/A
Weight:	44g

Packaging

Number per carton:	440
Carton Dimension:	440 x 520 x 545mm
Carton Weight:	30.4Kg
Standard Packaging:	Bulk packed
Alternative Packaging:	Mailing Sleeves, Shrink Wrapped, Bag with Header Card, Envelope

Recommendations & Limitations

Please note that the MOQ for 5mm thick foam is 3,500 with a lead-time of 15 days from proof approval.

Ideal for: Postal Campaigns, IT Companies, Educational Organisations, Pharmaceutical, Recruitment

PhotoMat

Sizes available: 200 x 235mm

Screen Print:

- Editable EPS file
- Image saved at 100% size or larger
- Pantone® references supplied for colours
- Fonts supplied or text saved as curves

Full colour:

- All graphics should be supplied as high resolution CMYK files at a minimum of 300dpi
- All design components must be supplied and clearly identified. This includes Tiff, EPS and PDF files; all printer fonts used in the main file & imported graphics.

Regardless of print method:

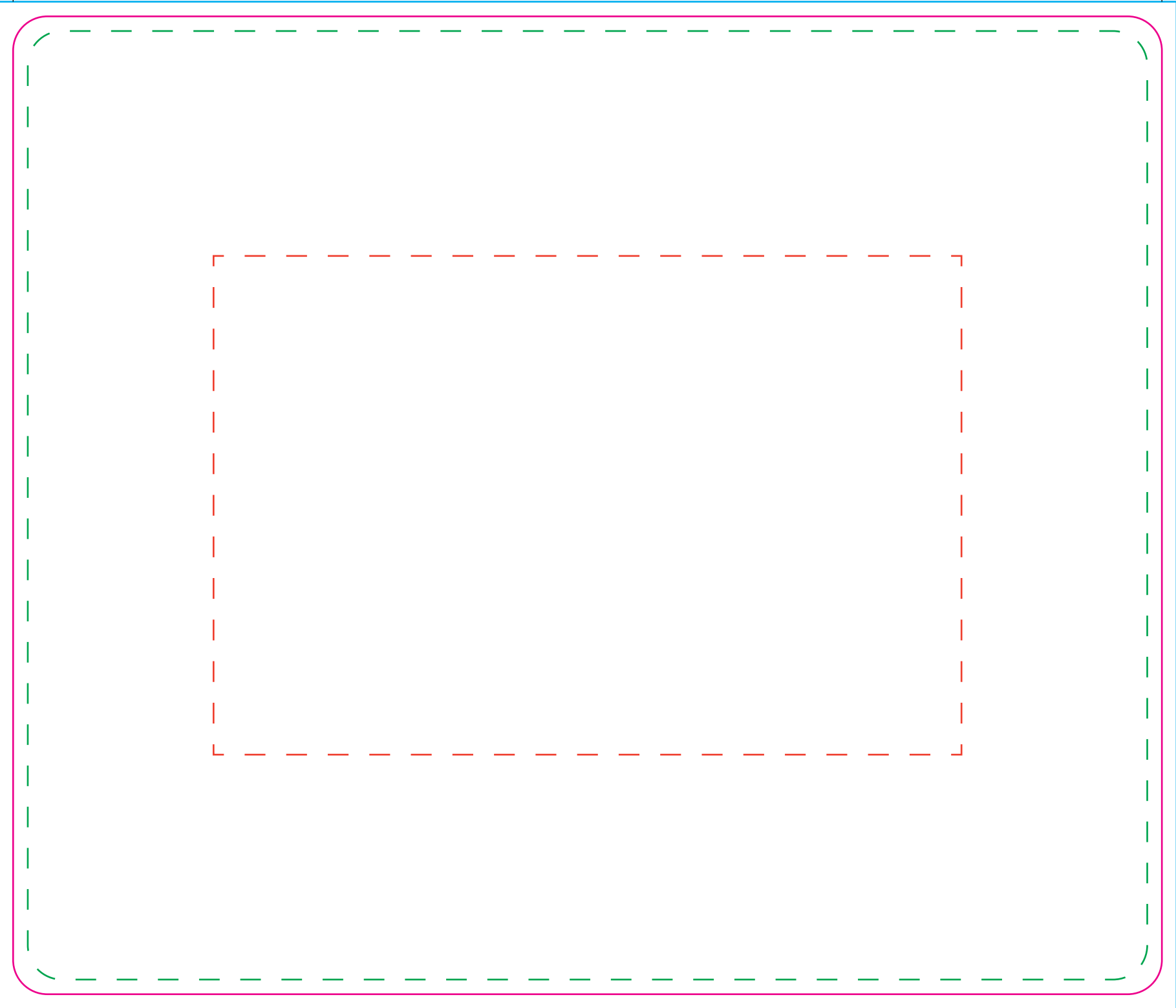
- Allow 5mm bleed all around the design.
- Artwork to be emailed with your order number and company name in the reference line or supplied on CD with same information clearly labelled.

More information on the limitations & recommendations are available for each printing method on request.

QR Codes - Please note that the print process and substrates used in the production of this item may not always allow QR codes, if present on your artwork, to function correctly. When approving your proof, you are accepting that this may be the case and as such accept full liability for any malfunction of the QR code.

See the following page(s) for the artwork templates for this product.

All information correct at time of writing. Whilst we endeavour to maintain the accuracy of this document, details may change without notice.



PhotoMat

Tool No: 235
Shape: Rectangle

Cut Size -
Width: 235mm
Height: 200mm

Artwork with Bleed -
Width: 241mm
Height: 206mm

Window Size -
Width: 153mm
Height: 102mm

--- Please keep all live matter such as text, logos and other important images within this area.

This dieline represents a current finishing tool. Any alterations to this dieline may incur additional charges.