

## Business Card Mat

Superior HardTop Mat with a pocket along one edge which can be made to hold almost any size business card. Excellent as a promotional sales giveaway.



## Key Product Information

|                              |                                        |
|------------------------------|----------------------------------------|
| Product Code:                | 11004BUS                               |
| Commodity Code:              | 39269092                               |
| MOQ:                         | 100                                    |
| Size:                        | See Artwork Requirements               |
| Thickness:                   | 3mm                                    |
| Print Area:                  | Within dimensions (pocket 85mm x 54mm) |
| Print Type:                  | Screen Print or 4 Colour Process       |
| Material:                    | PVC laminated to a foam base           |
| Source:                      | UK                                     |
| PDF proof lead time:         | 24-48 Hours                            |
| Express Service:             | Not Available                          |
| Printed proof (if required): | 3 Working days                         |
| Production lead time:        | 10 Working days from proof approval    |
| Standard colours:            | N/A                                    |
| Weight:                      | 44g                                    |

## Packaging

|                        |                                                                 |
|------------------------|-----------------------------------------------------------------|
| Number per carton:     | 440                                                             |
| Carton Dimension:      | 440 x 520 x 545mm                                               |
| Carton Weight:         | 30.4Kg                                                          |
| Standard Packaging:    | Bulk packed                                                     |
| Alternative Packaging: | Mailing Sleeves, Shrink Wrapped, Bag with Header Card, Envelope |

## Recommendations & Limitations

Ideal for: Field Sales Representatives - can be customised for each member of your sales team simply by adding a different business card.

Business card window can be placed anywhere around the outside edge but please leave at least 15mm from the nearest mouse mat corner.

Business cards *NOT* included!

## Business Card Mat

Sizes available: 200 x 235mm

### Screen Print:

- Editable EPS file
- Image saved at 100% size or larger
- Pantone® references supplied for colours
- Fonts supplied or text saved as curves

### Full colour:

- All graphics should be supplied as high resolution CMYK files at a minimum of 300dpi
- All design components must be supplied and clearly identified. This includes Tiff, EPS and PDF files; all printer fonts used in the main file & imported graphics.

### Regardless of print method:

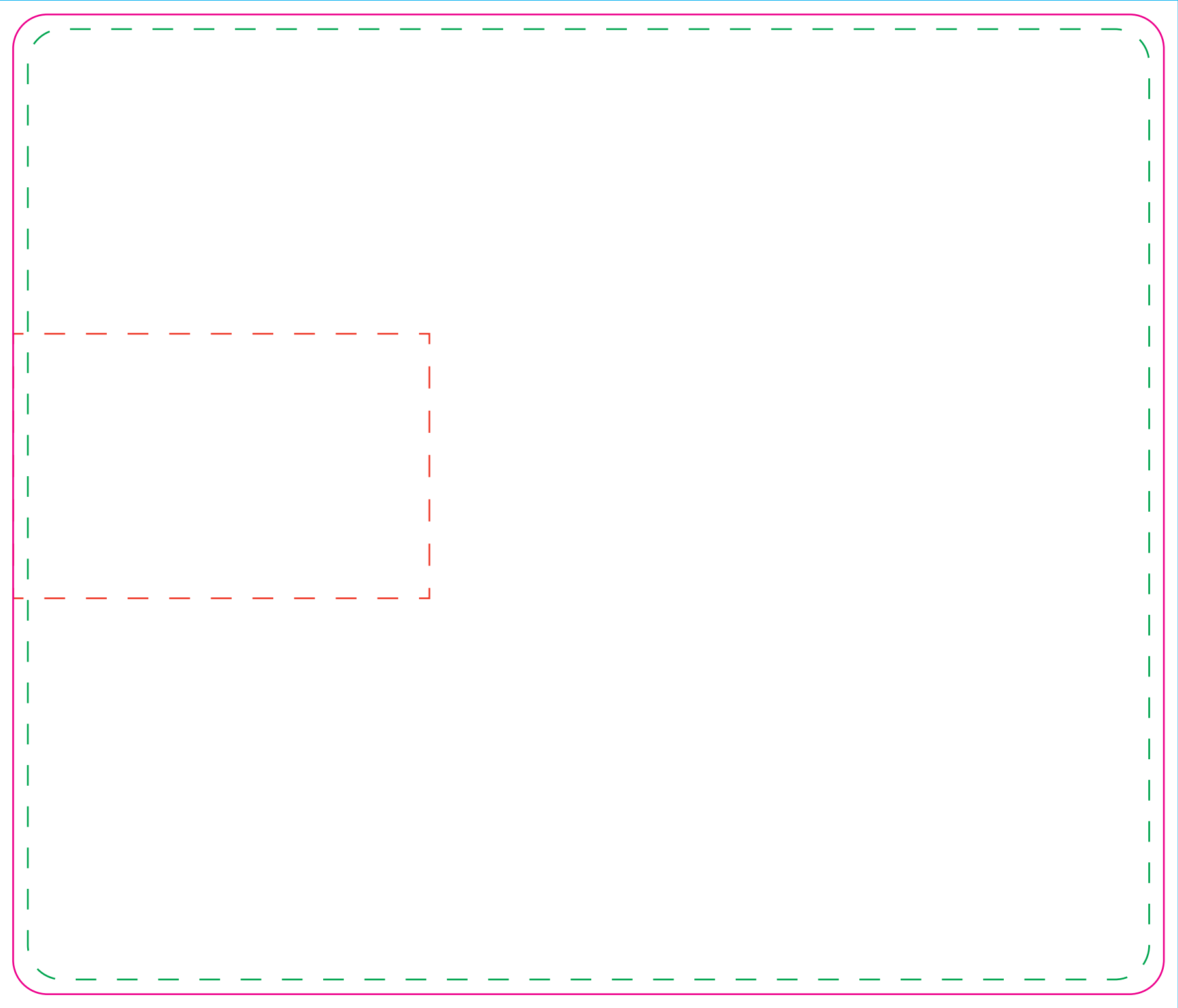
- Allow 5mm bleed all around the design.
- Artwork to be emailed with your order number and company name in the reference line or supplied on CD with same information clearly labelled.

Full detailed guidelines including limitations & recommendations are available for each printing method on request.

QR Codes - Please note that the print process and substrates used in the production of this item may not always allow QR codes, if present on your artwork, to function correctly. When approving your proof, you are accepting that this may be the case and as such accept full liability for any malfunction of the QR code.

See the following page(s) for the artwork templates for this product.

All information correct at time of publication. Whilst we endeavour to maintain the accuracy of this document, details may change without notice.



## BusinessCard Mat

**Tool No:** 235  
**Shape:** Rectangle

**Cut Size -**  
**Width:** 235mm  
**Height:** 200mm

**Artwork with Bleed -**  
**Width:** 241mm  
**Height:** 206mm

**Window Size -**  
**Width:** 85mm  
**Height:** 54mm

**Window can be anywhere on the edge of the mat apart from the corners. The window can be portrait or landscape.**

**--- Please keep all live matter such as text, logos and other important images within this area.**

**This dieline represents a current finishing tool. Any alterations to this dieline may incur additional charges.**